



VENUE GUIDE

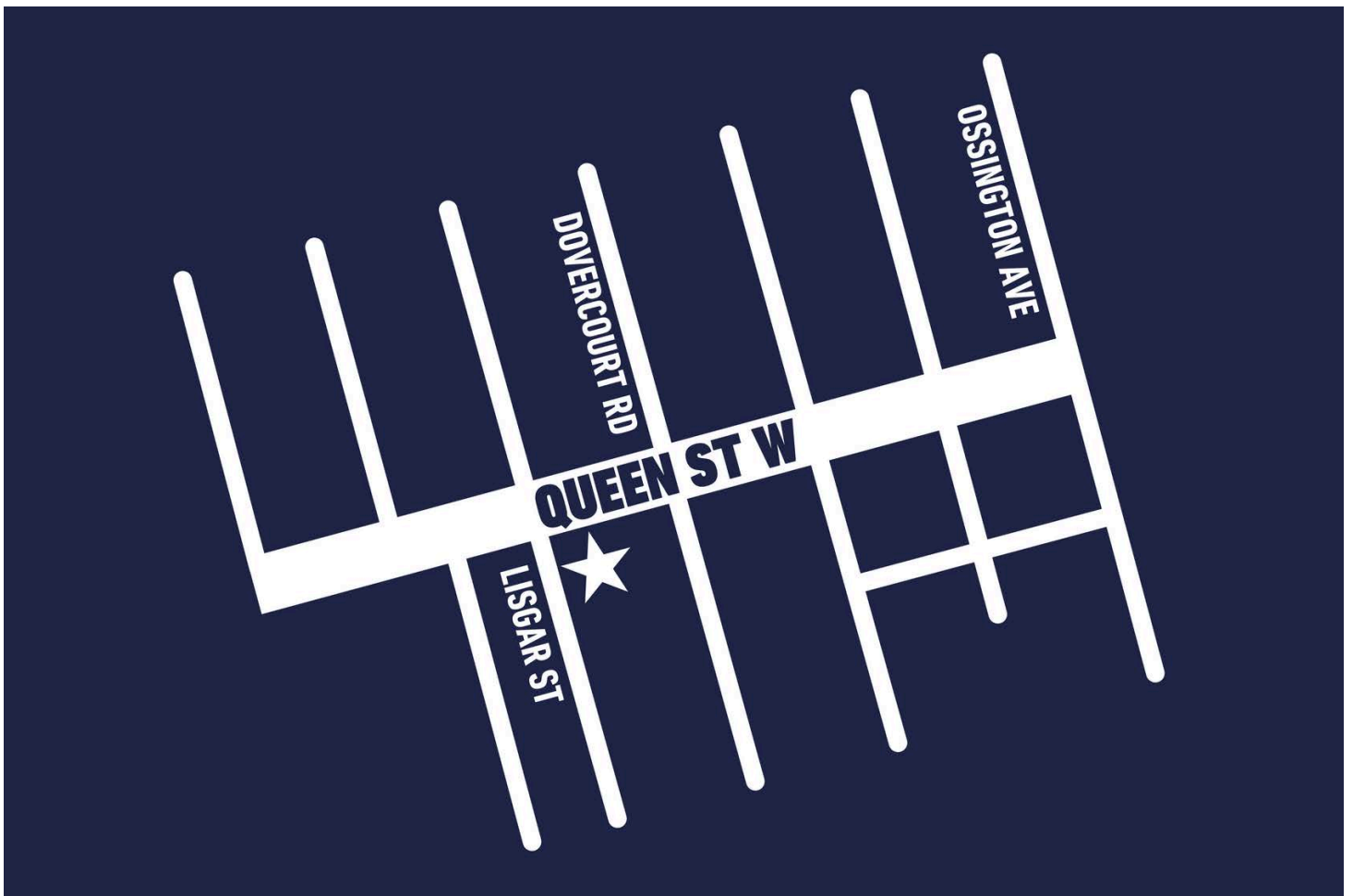


Welcome!

We are so excited for you to join us at The Theatre Centre for 'Sit Down Comedy Show'! Below is some helpful information about the theatre to help prepare you for your visit.

GETTING HERE

The Theatre Centre is located in Toronto, Ontario, at 1115 Queen Street West, ON M6J 1J1. The closest major intersection is Queen Street West and Dovercourt Road.





Subway

The two closest accessible subway stations are Ossington Station and Osgoode Station. From Ossington Station, you will take the 63 bus south. From Osgoode Station, you will take the 501 Queen to Humber streetcar west.



Bus

Take the 63 Ossington to Liberty Village bus south from Ossington Station. Get off at Queen Street West, cross to the south side of the street, and turn right or head west. It is a 6-minute walk or 400-metre journey from the bus stop and the theatre will be on your left.



Streetcar

Take the 501 Queen streetcar west from Osgoode Station. Ride 12 stops to get off at Queen Street West at Dovercourt Road. Cross to the south side of the street and turn right or head west. It is about a 2-minute walk or 100-metre journey from the streetcar stop, and the theatre will be on your left.



Taxi

The Theatre Centre is located at 1115 Queen Street West, Toronto. Let your driver know that you would like to be dropped off on Lisgar Street at the corner of Queen Street West and Lisgar Street.



Wheel-Trans

The Theatre Centre is located at 1115 Queen Street West, Toronto. To avoid the busyness of Queen Street West, let your driver know that you would like to be dropped off at 99 Lisgar Street at the corner of Queen Street West and Lisgar Street. There is a curb cut at this corner that will lead you directly to the ramp and into the theatre.



Parking

There is no parking on-site; however, there is limited metered parking on nearby side streets and an accessible Green P parking lot located at 45 Abell Street, just a 3-minute walk or 250-metre journey from The Theatre Centre. Exit the parking lot on Lisgar Street, head north, and the theatre will be on your right.

ARRIVING

The theatre is located on the south side of Queen Street West between Lisgar Street and Dovercourt Road. There is one primary entrance just off of Lisgar Street, accessible by a few steps or a ramp.



ARRIVING

This is what the theatre looks like if you are heading west on Queen Street West from Dovercourt Road.



This is what the theatre looks like if you are heading east on Queen Street West from Lisgar Street.



ENTERING

Once you arrive, you will enter the lobby and café space using a descending ramp (49" at the narrowest point) or by going down 3 steps.



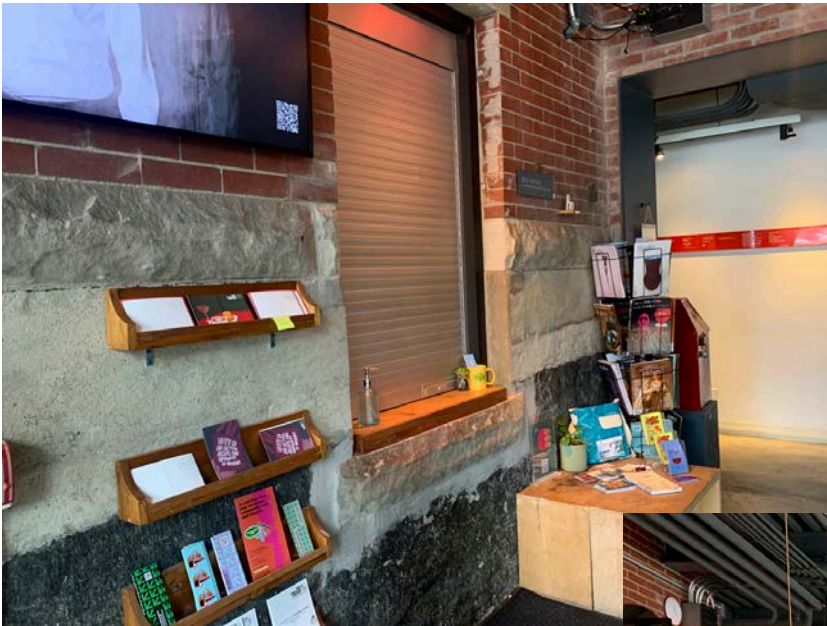
ENTERING

At the bottom of the steps or ramp, you will pass through two sets of double doors to enter the lobby (each door is 40"). The first push to open button will be on your left (35") and the second will be on your right after the first set of doors (40").



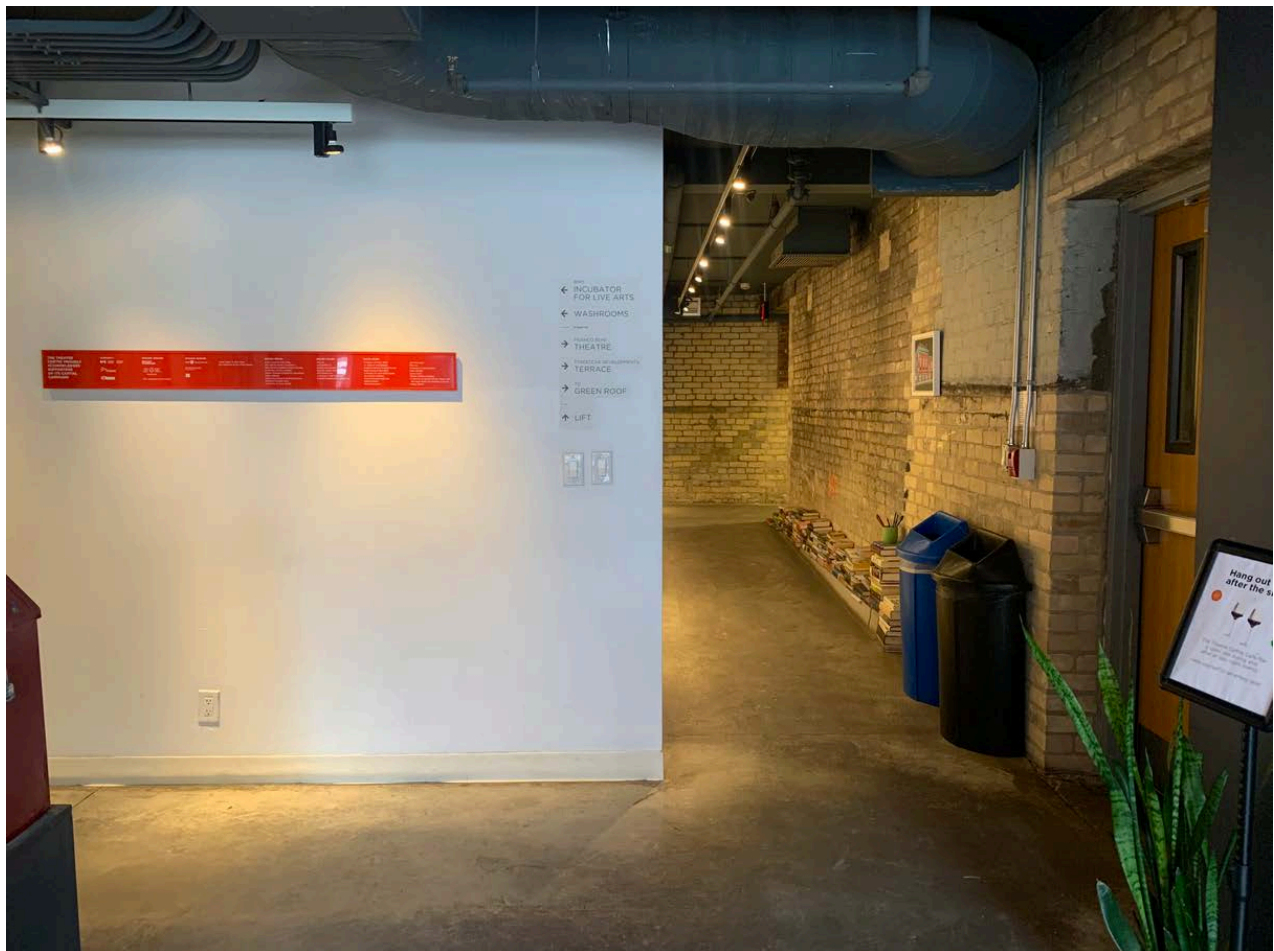
BOX OFFICE AND CAFÉ

As you enter the lobby, the box office (36" high) will be to your left should you need to pick up or purchase tickets, and in front of you will be the lovely community café. The café is set up with comfortable places to sit. You are welcome to grab a beverage or snack to enjoy before the show or take into the theatre.



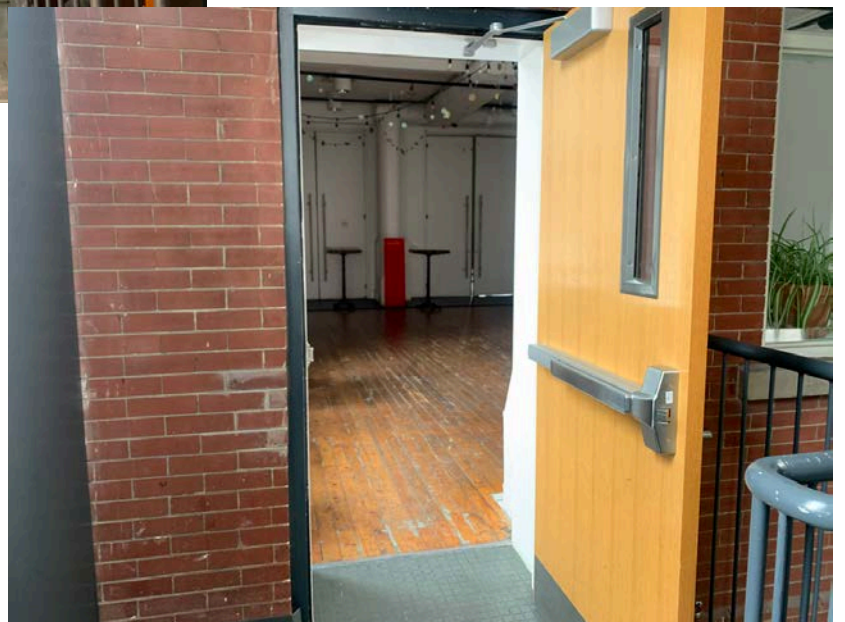
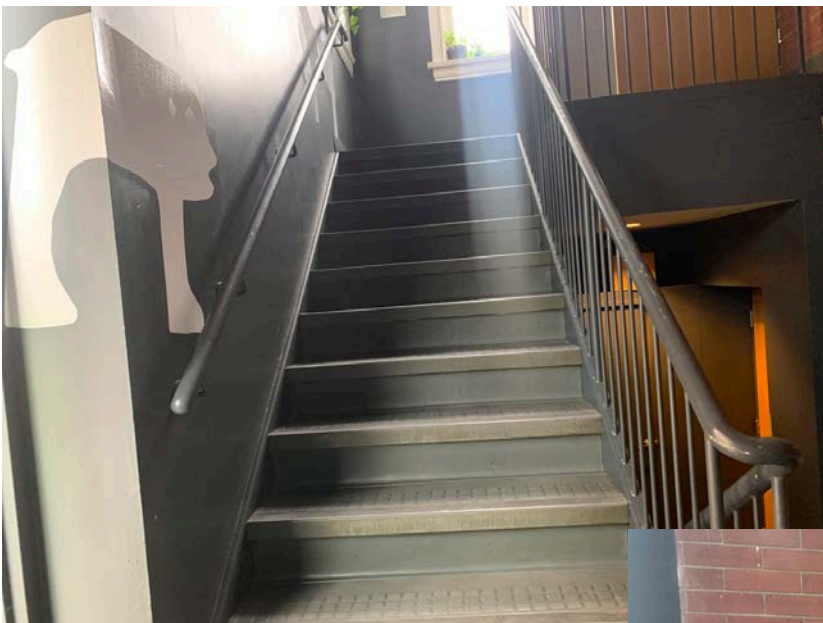
BOX OFFICE AND CAFÉ

The Theatre Centre is a large building with multiple floors and theatres. As you continue left past the box office, you can continue straight down the hallway to access the lift, turn left to access the washrooms, or turn right to head through the light wood door to head up two flights of stairs to the theatre where the show will take place.



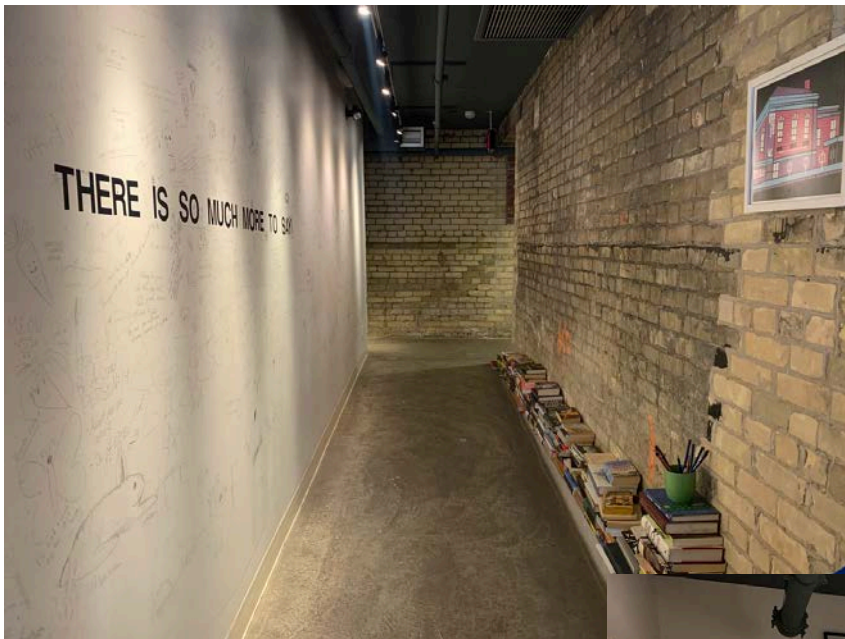
PATHWAY TO THE THEATRE

The theatre is on the third floor of the building and can be accessed via stairs or lift. To access the theatre using stairs, head through the doorway on the right (37") just past the café and up two flights of stairs. Head through the door at the top of the stairs (37") to enter the lobby.



PATHWAY TO THE THEATRE

To access the theatre via lift, head straight past the box office down the hallway and turn right. The lift will be on your right. You will need a member of staff to accompany you up to the third floor.



THE LIFT



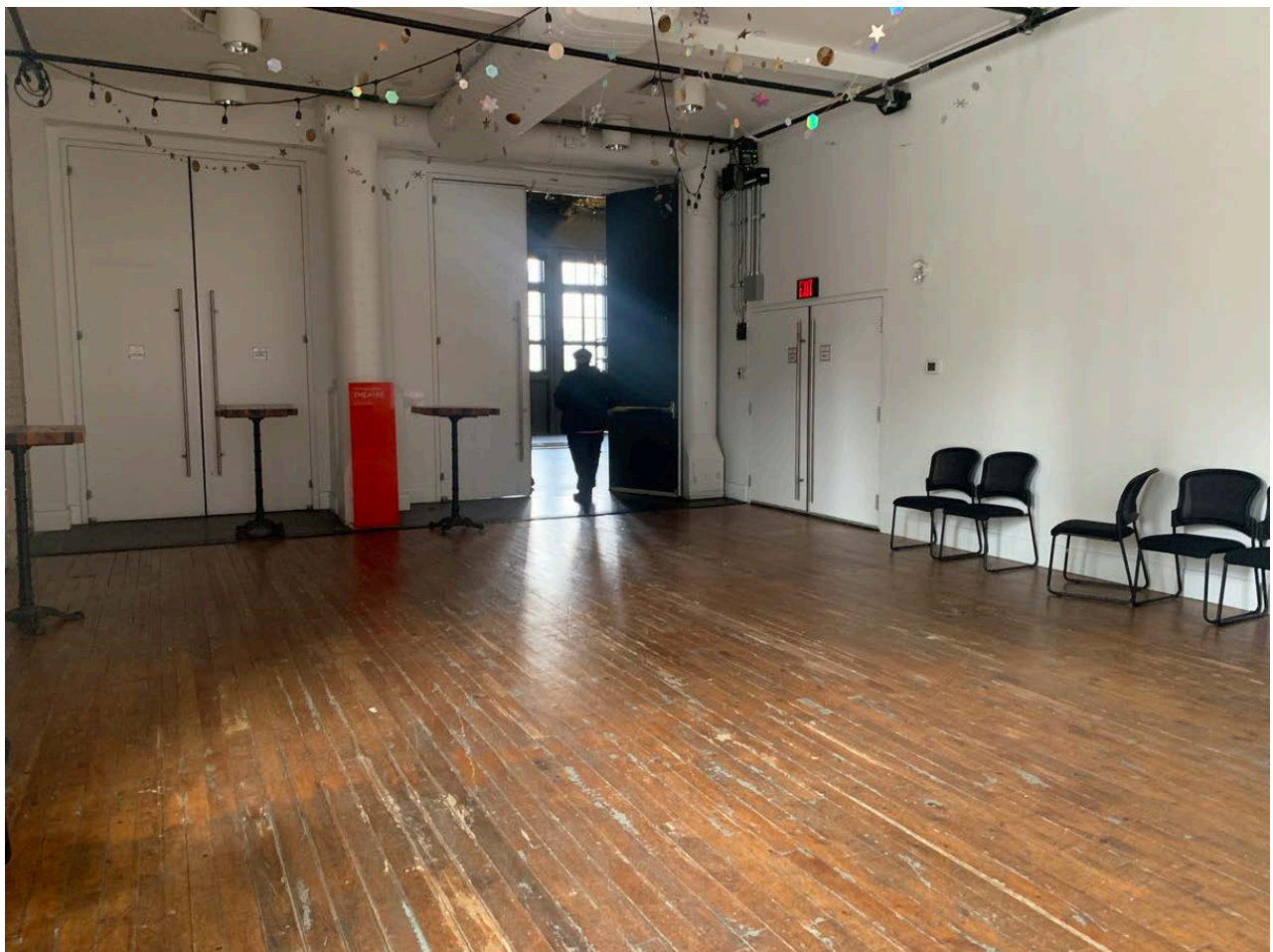
Doorway: 35"



Lift Dimensions: 60" x 37"

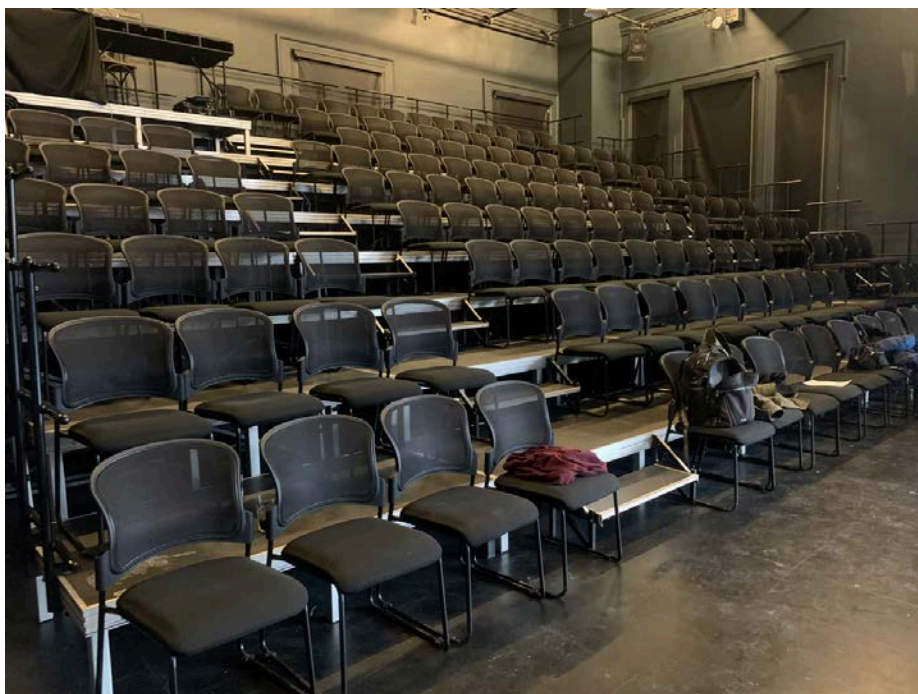
THE LOBBY

This is the lobby! Upon exiting the lift, you will turn left to head down a short hallway into this space, or at the top of the stairs, you will head through a doorway into this space. Here you will find the bar and the access table where you can pick up audio description devices, earplugs, fidget toys and other access tools. You will enter the theatre through the propped open door (39") on the far side of the room.



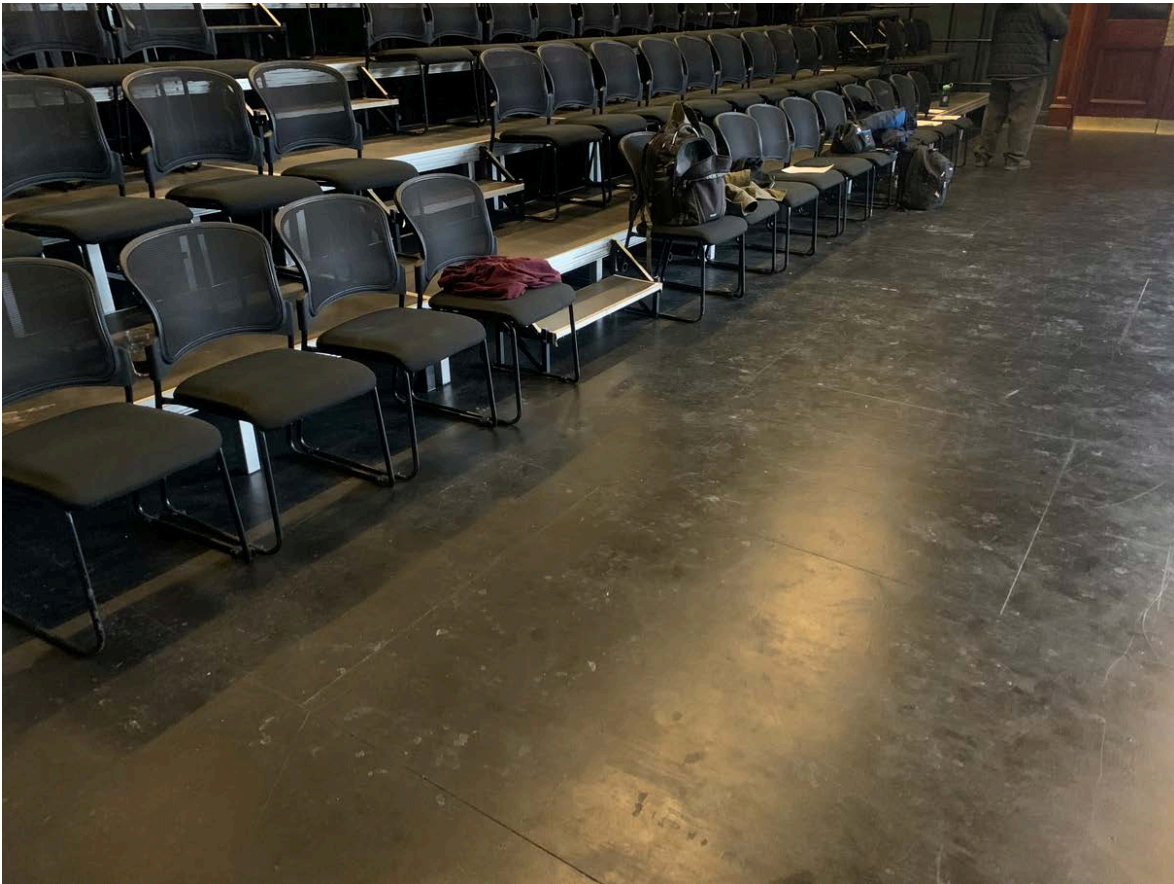
THE THEATRE

The theatre has raked seating and the stage is level with the front row of the audience. Upon entering the theatre, you will be at the bottom of the raked seating and the stage will be to your right. It is general admission so feel free to choose any seat that you'd like! Each chair is about 18" wide and has no arms.



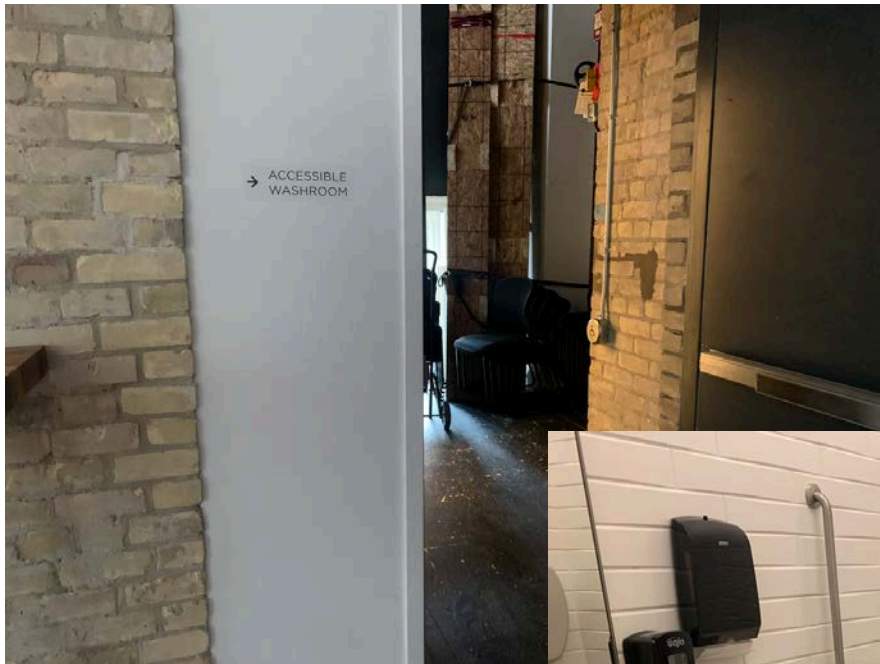
ACCESSIBLE SEATING

Accessible seating will be available in the first two rows on the ground level of the theatre. Seats for d/Deaf audience members will be reserved on the far side of the theatre in front of interpreters and seats for Blind and Low Vision audience members will be reserved in the front row. Please include your access needs in the notes of your ticket order so that we can anticipate your needs with priority and reserved seating.



ACCESSIBLE WASHROOMS

There is one accessible washroom on the third floor located just outside of the theatre to the right. Upon exiting the theatre, turn right to head through the doorway (35"). The push-to-open button will be on your right (36" high) and the washroom will be on your left.



Doorway: 35"
Space under sink: 30"
Sink height: 33"
Toilet: 17.5"
Soap: 36"



This washroom has an infant-sized change table and grab bars. It does not have an emergency cord or button.

WASHROOMS

There are two gendered washrooms with multiple stalls and one private accessible-sized washroom on the main floor, just past the box office or straight ahead and on your right upon exiting the stairwell.



This is the accessible-sized washroom; however, it does not have a push-to-open button for the door. Volunteers will be available to assist with the door upon request.

Doorway: 33"

Space under sink: 30"

Sink height: 33"

Toilet: 17.5"

Soap: 36"

Infant-sized change table

WASHROOMS

To the left is the "women's" washroom. It has four small stalls and three sinks.

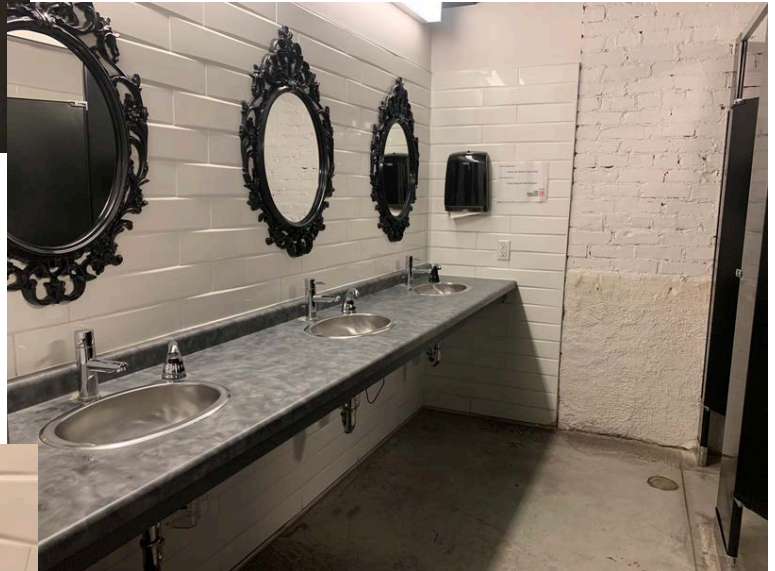


Doorway: 30"

Stall: 55"x38"

Toilet: 17.5"

Sink: 34"



WASHROOMS

To the right is the "men's" washroom. It has three urinals, one stall and two sinks.



Doorway: 30"

Stall: 32"x61"

Toilet: 17.5"

Sink: 34"



VOLUNTEERS

Our volunteers and staff will be located throughout the space and will be more than happy to assist you or answer any questions you may have. We will have English-speaking and ASL volunteers/interpreters as well as sighted guides available. All staff members and volunteers will be wearing lanyards that look like this:





We can't wait for you to join us!

If you have any questions, please don't
hesitate to reach out to our team at

The Disability Collective:

team@thedisabilitycollective.com

ali@thedisabilitycollective.com