

the disability collective



ACCESS GUIDE



Welcome!

We are so excited for you to join us at Comedy Bar Danforth for Sit Down Comedy Show! Below is some helpful information about the show and the theatre to help prepare you for your visit.

ARRIVING



This is what the theatre looks like if you are traveling east on Danforth Avenue from Main Street Station.



This is what the theatre looks like if you are traveling west on Danforth Avenue from Victoria Park Station.

ENTERING

There are two entrances to the theatre both of which are at the front of the building on Danforth Avenue. The first door on the west side has a push-to-open button and the second does not. Both lead into the main space and to the box office.



ENTERING THE THEATRE

At the end of the bar you will find a hallway where the audience will line up prior to the show. There will be staff and volunteers present throughout the space and at the podium to assist you should you require advanced entry for access (accessible seating, being close to the stage or interpreters, etc.).



THE THEATRE

When you enter the space, the stage will be to your right and the audience to your left. There is an array of seating options including standalone seats without arms, stools at tables, and benches or banquettes with small tables.



THE SHOW

Sit Down Comedy Show is a comedy show featuring 5 Deaf and disabled comedians doing comedy sets between 5 and 15 minutes long.

TIPS!

- We encourage you to laugh and cheer throughout the evening but it is absolutely not required!
- Our performers may interact with you! Feel free to engage or not, but know that if you are closer to the stage, you will have a higher chance of getting a little shout-out!
- Heckling will not be tolerated at our event! We understand that some jokes are not for everyone, and you may even feel inclined to yell out some funny remarks toward our comedians; however, we ask you to keep your opinions to yourself and to leave the jokes to the comedians in order to maintain a safe and fun space for everyone. For more information please see our Safe Spaces & Anti-Harrasment Policy at thedisabilitycollective.com/safespaces.



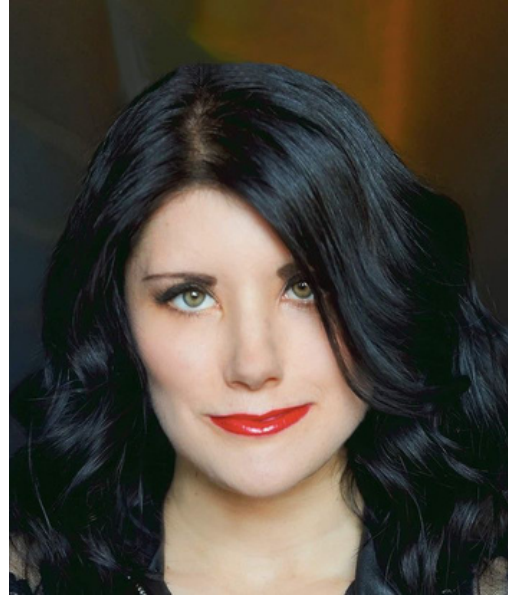
CONTENT WARNINGS

- Sexual content
- Ableism
- Cancer
- Abortion
- Discrimination
- Mature language
- Religion
- Audism

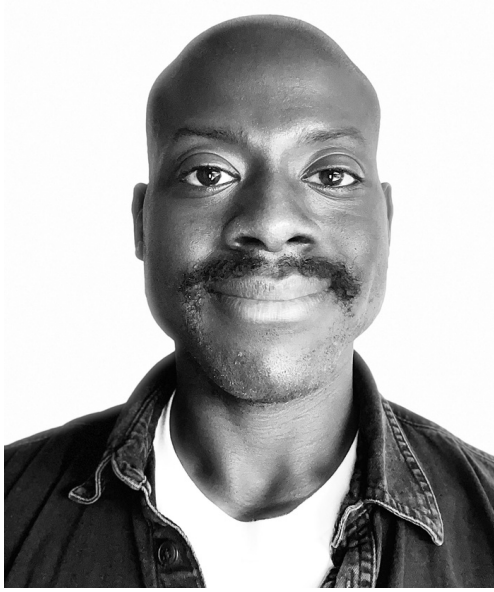
MEET OUR COMEDIANS!



ROSANI CHRISTY



COURTNEY GILMOUR



ROBERT HAUGHTON



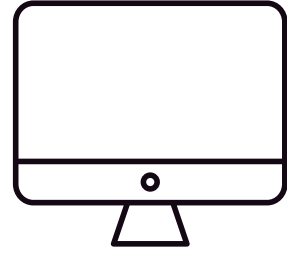
DESIREE WALSH



ANDIE HONG

LIVESTREAM

If you are unable to attend in person, we will be livestreaming the event. The stream will include automated captions and will capture our live ASL interpreters.



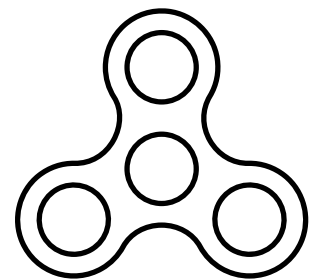
ASL INTERPRETATION



For our d/Deaf & Hard of Hearing community, we will have ASL and Deaf Interpretation of the entire show, as well as an ASL volunteer at the box office should you require assistance.

RELAXED ENVIROMENT

This is not a relaxed performance; however, the environment will be extremely relaxed. You can come and go throughout the show, the house lights will be partially on, and there will be fidget toys and earplugs available.



VOLUNTEERS

Our volunteers will be at the entrance of the theatre, as well as roaming around, and will be more than happy to assist you or answer any questions that you may have. We will have English-speaking and ASL volunteers. They will be wearing a lanyard that looks like this:



the disability collective



We can't wait to see you there!

If you have any questions, please don't
hesitate to reach out to our team at

The Disability Collective:

team@thedisabilitycollective.com