



# THE ROCKY HORROR PICTURE SHOW

## ACCESS GUIDE

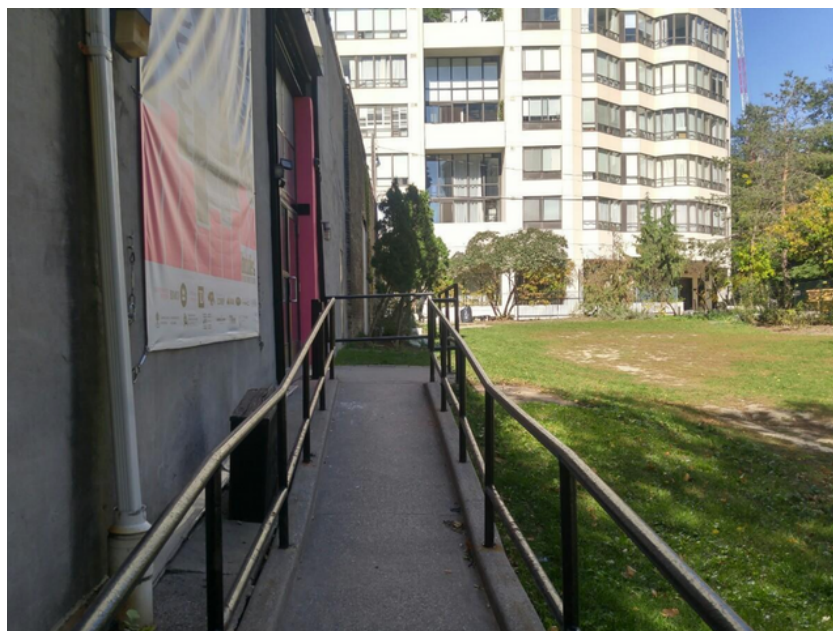


### Welcome!

We are so excited for you to join us at Buddies in Bad Times Theatre for The Rocky Horror Picture Show ASL-Interpreted Screening! Below is some helpful information about the show and the theatre to help prepare you for your visit.

# ENTERING

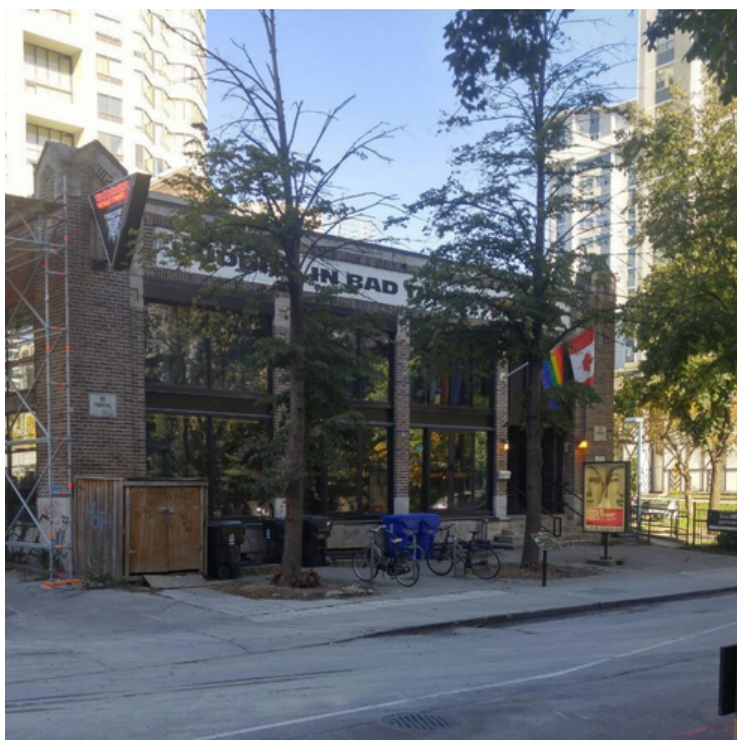
Once you arrive, you will enter the building by going up a ramp to the main entrance on the side of the building next to Alexander Street Parkette.





# ARRIVING

There is one primary entrance to the theatre and it is located on the north side of the street. There is a ramp on the east side of the building that will lead you to the main entrance.



This is what the theatre looks like if you are coming from Yonge Street.



This is what the theatre looks like if you are coming from Church Street.



# THE THEATRE

When you enter the Chamber, you will go around the side of the risers to get to your seat. There will be rows of chairs set up on risers with aisles on either side. There will be seats reserved for access needs.





# THE SHOW

In this cult classic musical movie, sweethearts Brad and Janet, stuck with a flat tire during a storm, discover the eerie, bizarre mansion of Dr. Frank-N-Furter, a transvestite scientist. Through elaborate dance numbers and rock songs, their innocence is lost and they meet a houseful of wild characters.

## TIPS!

- This movie is a “cult classic” meaning that the audience will cheer, clap, dance, and sing along! Feel free to get swept up in the show or sit quietly and watch, but know that the audience may be a bit rowdy and that's great!
- Rocky Horror is an interactive movie! There are a series of “callouts” that folks will do throughout the movie but it is absolutely not required. We will have a list of some of the most popular callouts below. Feel free to join in or sit and enjoy.
- Audience members often dress up when they come to see Rocky Horror! We invite you to dress up on theme or as your favourite character but no pressure at all!

\*Please note: We will be taking a 15-minute intermission after “I Can Make You A Man (Reprise)”.



# CONTENT WARNINGS

- Sexual Content
- Coarse Language
- Nudity
- Audience Interaction

If you would like to further review the content of the show, click the link below to view a more detailed summary.

[Rocky Horror Summary](#)

To check out the “callouts” prior to the event, click the link below.

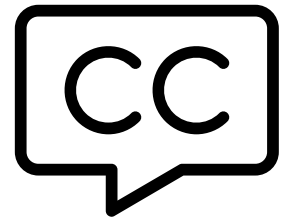
[Rocky Horror Popular Callouts](#)





# CAPTIONS

For our d/Deaf & Hard of Hearing community, the entire film will feature open captions.



# ASL INTERPRETATION

For our d/Deaf & Hard of Hearing community, we will have Deaf Interpretation of the entire show, as well as ASL volunteers at the box office should you require assistance.



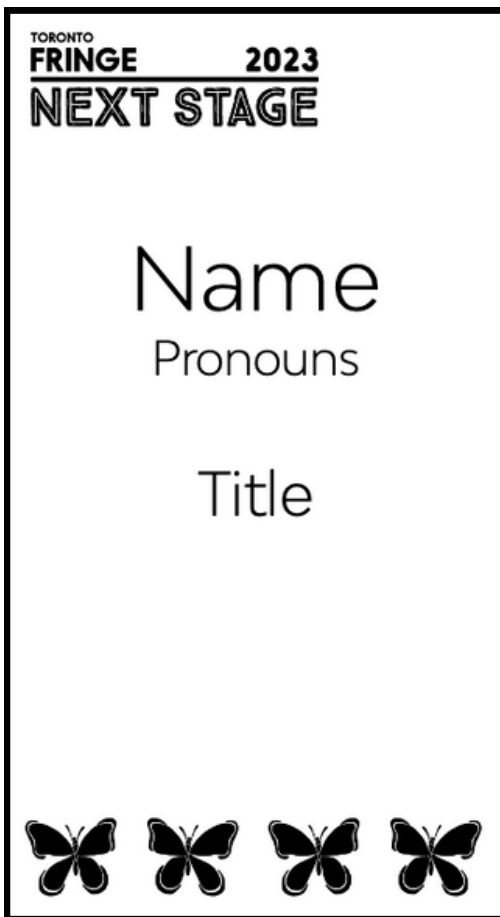
# QUIET AREA

If you need a break from the hustle and bustle of the show, we will have a dedicated Quiet Area with space to relax, fidget toys, and earplugs, located on the lower level of the theatre.



# VOLUNTEERS

Our volunteers will be at the entrance of the theatre, as well as roaming around, and will be more than happy to assist you or answer any questions that you may have. We will have English-speaking and ASL volunteers. They will be wearing one of the two following lanyards:







**We can't wait to see you there!**

**If you have any questions, please don't  
hesitate to reach out to our team at  
The Disability Collective:**

**[team@thedisabilitycollective.com](mailto:team@thedisabilitycollective.com)**