

CRIP

tonite

ACCESS GUIDE

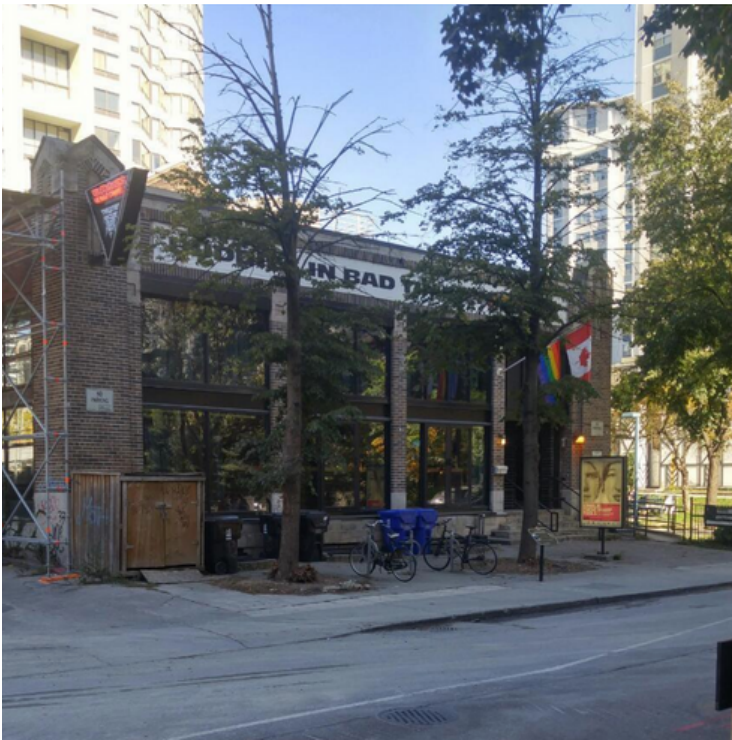


Welcome!

We are so excited for you to join us at Buddies in Bad Times Theatre for CRIPtonite! Below is some helpful information about the show and the theatre to help prepare you for your visit.

ARRIVING

There is one primary entrance to the theatre and it is located on the north side of the street. There is a ramp on the east side of the building that will lead you to the main entrance.



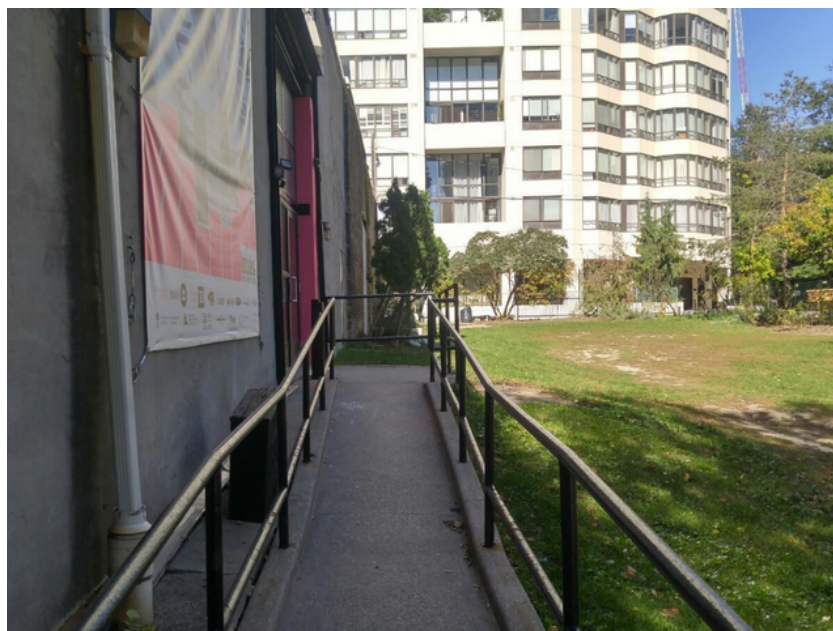
This is what the theatre looks like if you are coming from Yonge Street.



This is what the theatre looks like if you are coming from Church Street.

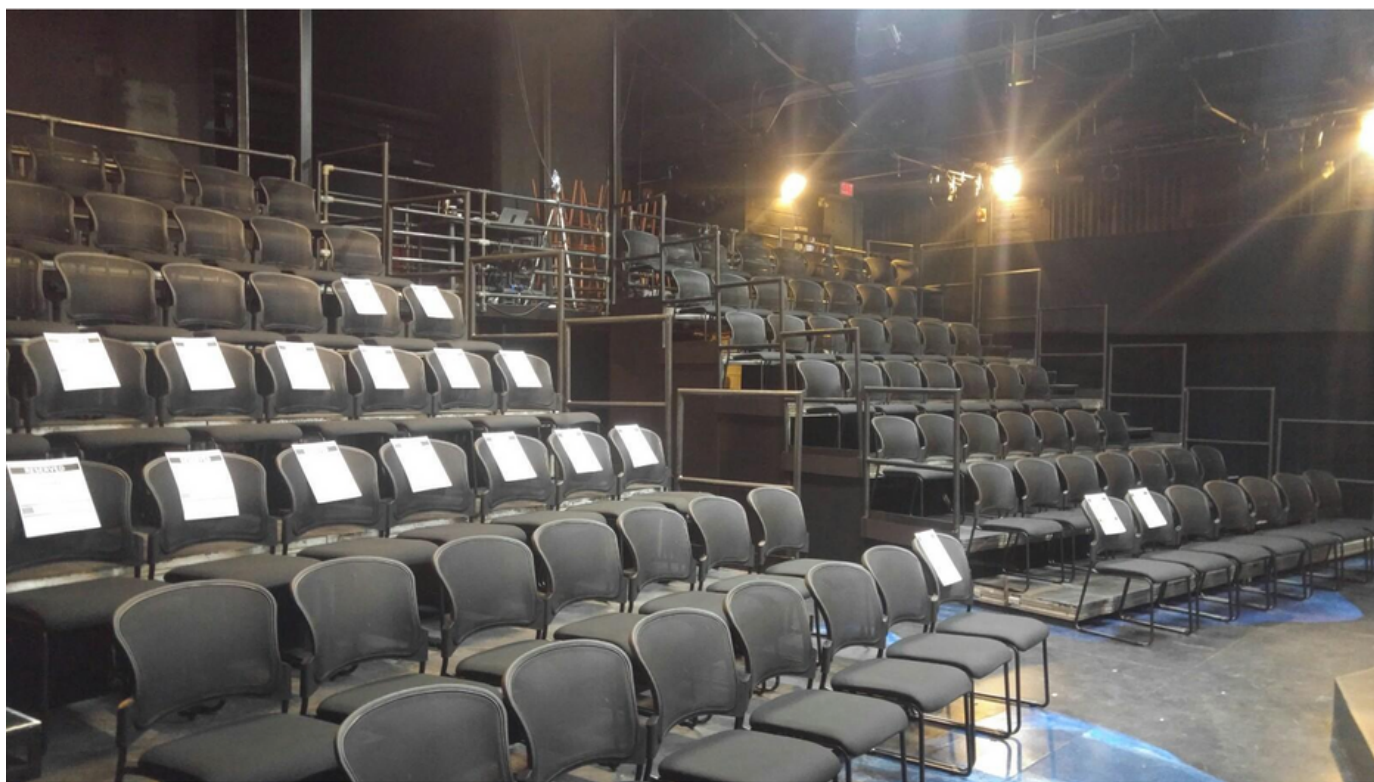
ENTERING

Once you arrive, you will enter the building by going up a ramp to the main entrance on the side of the building next to Alexander Street Parkette.



THE THEATRE

When you enter the space, the audience will be directly in front of you and the stage will be at the far side of the room. The audience will be split into two sections and on one level. Accessible seating will be available and additional accessible seats will be reserved for folks who would like to sit close to the interpreters or close to the stage. The stage will be accessible by stairs and a ramp and will be about three feet tall.



Please note: This is a picture of the space but the chairs will all be on one level.

THE SHOW

CRIPtonite is a drag and burlesque show featuring 13 disabled performers. There will be music, lights, lip syncing, sexy dancing, and of course bright, sparkly, and potentially scandalous costumes. We know that this type of environment can be a bit overwhelming or even intimidating so here are some content warnings and tips!

TIPS!

- Cheer, clap, dance, and sing along! Feel free to get swept up in the show or sit quietly and watch, but know that the audience may be a bit rowdy and that's great!
- Our performers may interact with you! Feel free to engage or not, but know that if you are closer to the stage you will have a higher chance of getting a little shout-out!
- Tips are always welcome at a Drag and Burlesque show! We will be passing a bucket around for audience members to tip generously and the tips will be split between all the performers and the host at the end of the show! There is an ATM onsite - check out our [Venue Guide](#) for more information!

CONTENT WARNINGS

- Nudity
- Sexual Content
- Coarse Language
- Audience Interaction
- Smudging
- Mention of:
 - Ableism
 - Discrimination
 - Medical Diagnoses
 - Colonialism

If you would like to further review the content of the show, click the link below to view all of the performer's songs and lyrics.

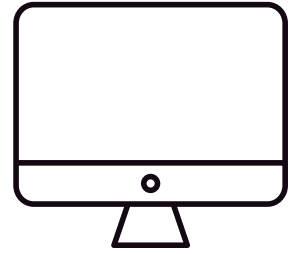
[CRIPtonite Script](#)

If you would like to get a better idea of who you will be seeing, please click the link below to meet our cast.

[CRIPtonite Cast List](#)

LIVESTREAM

If you are unable to attend in person, we will be livestreaming the event. The stream will include automated captions and will capture our live ASL interpreters.



ASL INTERPRETATION



For our Deaf & Hard of Hearing community, we will have ASL and Deaf Interpretation of the entire show as well as an ASL volunteer at the box office should you require assistance.

QUIET AREA

If you need a break from the hustle and bustle of the show, we will have a dedicated Quiet Area with space to relax, fidget toys, and earplugs, located on the lower level of the theatre.



VOLUNTEERS

Our volunteers will be at the entrance of the theatre as well as roaming around and will be more than happy to assist you or answer any questions that you may have. We will have English-speaking and ASL volunteers. They will be wearing a lanyard that looks like this:



CRIP

tonite

We can't wait to see you there!

If you have any questions, please don't
hesitate to reach out to our team at
The Disability Collective:

team@thedisabilitycollective.com